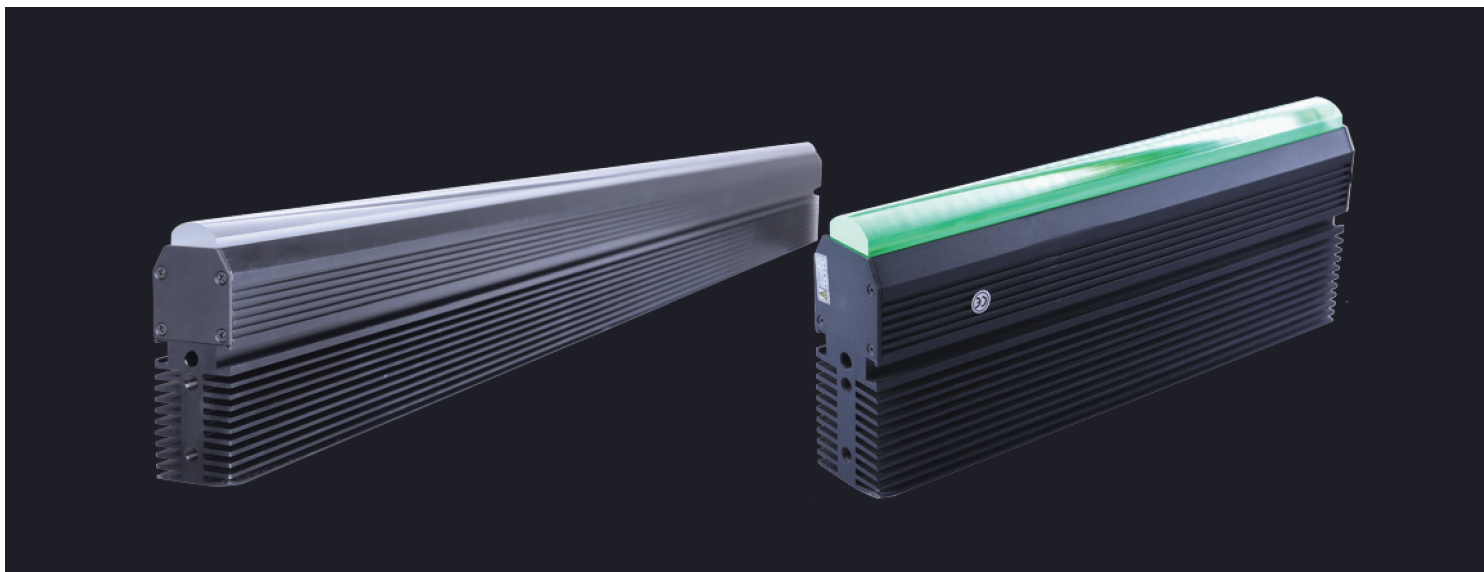


线光源



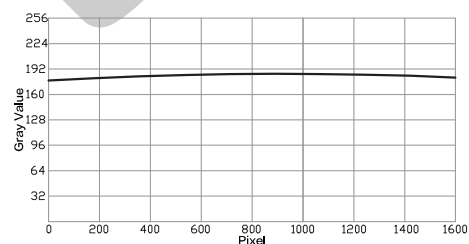
产品特点

- ◆ 采用高亮度大功率LED
- ◆ 采用独特的聚光技术，实现光源的高亮度

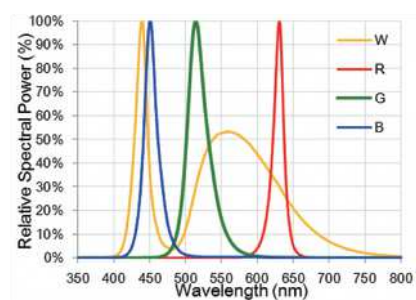
常用领域

- ◆ 配合线阵相机使用
- ◆ 纺织、印刷、玻璃、薄膜、钢板等高速在线检测

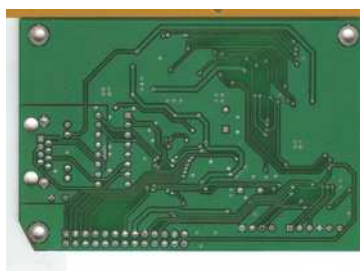
光源均匀性表图



光谱图

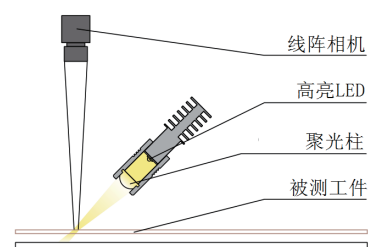


条码检测



PCB板质量检测

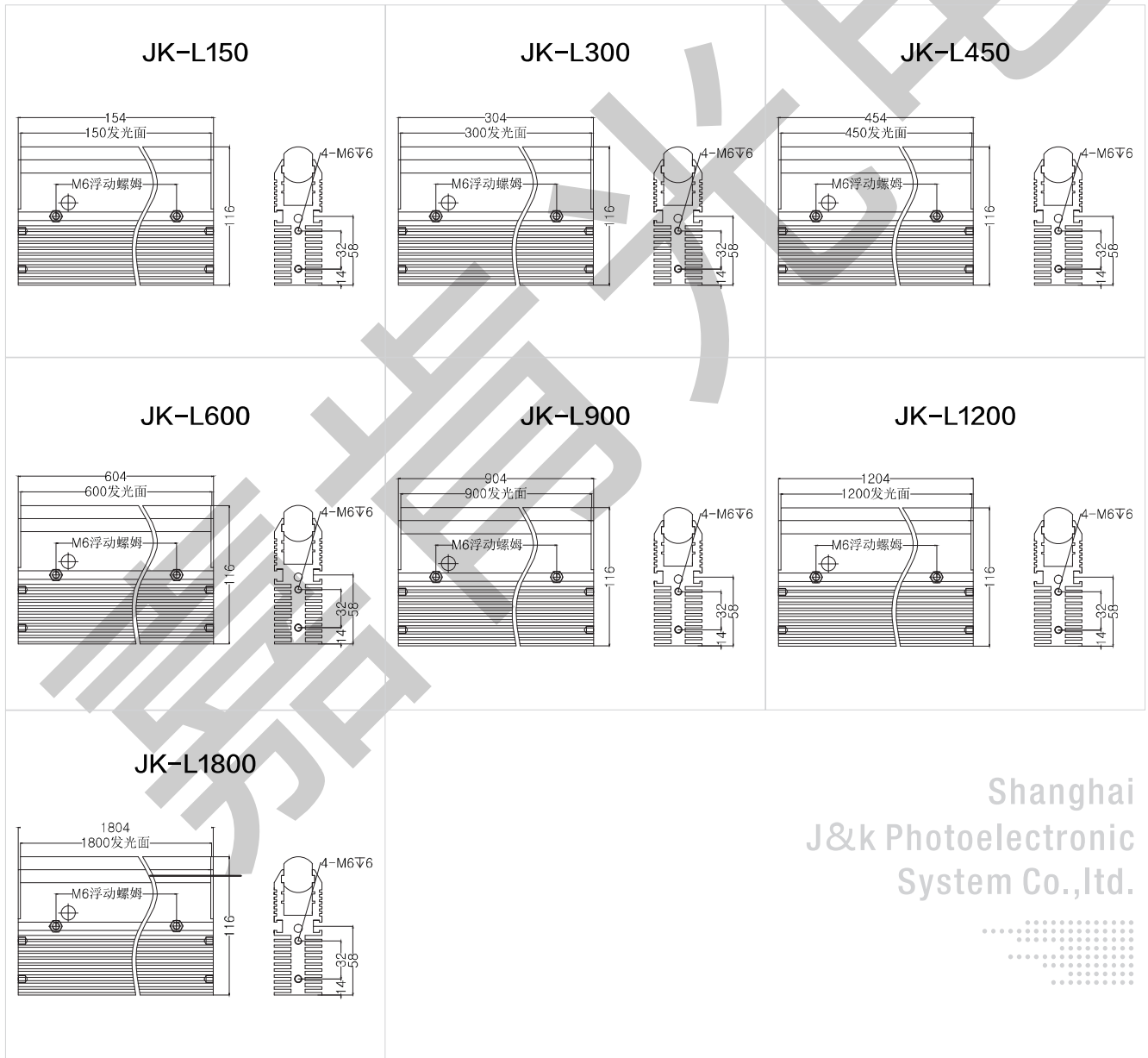
线光源打光示意图



产品参数

系列类型	型号	电压	功率(W)	功率(W)
LX系列	JK-L150	24V	● 10.5	○ ● ● 16.5
	JK-L300	24V	● 21	○ ● ● 33
	JK-L450	24V	● 31.5	○ ● ● 49.5
	JK-L600	24V	● 42	○ ● ● 66
	JK-L900	24V	● 63	○ ● ● 99
	JK-L1200	24V	● 84	○ ● ● 132
	JK-L1800	24V	● 126	○ ● ● 198

产品尺寸图



Shanghai
J&k Photoelectric
System Co., Ltd.

